

HYATT REGENCY ZURICH AIRPORT THE CIRCLE

The Circle 41

8058 Zurich Airport, Switzerland

T: +41 44 592 1234

E: hyattregency.zurich@hyatt.com

hyattregencyzurichairportthecircle.com

[@hyattregencyzurich](https://www.instagram.com/hyattregencyzurich)



ACCOMMODATIONS

255 well-appointed and spacious guestrooms, starting from 27 sq m, including 16 Regency Suites, 1 Ambassador Suite and 1 Presidential Suite with a private terrace overlooking the Park.

The Regency Club is located on the 9th floor and includes a private terrace overlooking the Park. Guests staying in the Regency Club Rooms can enjoy access to the Regency Club Lounge where daily continental breakfast, all-day snacks, tea, coffee and soft drinks, and evening cocktails & hors d'oeuvre are served.

Swiss inspired design with an abundance of natural daylight throughout all guest rooms and public spaces.

All Accommodations Offer

- Complimentary Wi-Fi
- Flat-screen TV with Staycast
- Spacious bathroom with amenities, robes and hairdryer
- Dedicated working area
- Chaise longue for relaxation
- Tea and coffee making facilities
- Minibar
- Dual-line telephone and voicemail
- In-room safety deposit box
- Individual climate control

MEETINGS & EVENTS

- Direct access to The Circle Convention Center: over 2,800 sq m of flexible space equipped with the latest technology and natural light in all spaces
- A 1,292 sq m Convention Hall with a mesmerizing foyer and atrium with capacity for up to 1,500 attendees
- 17 additional meeting rooms ranging from 30 to 290 sq m, all with floor-to-ceiling windows, providing an abundance of natural daylight
- Awarded with a LEED Platinum and MINERGIE Sustainability certificate
- In-house AV services and a virtual studio for digital events

LOCATION

Hyatt Regency Zurich Airport The Circle is conveniently located at walking distance from Zurich Airport and it is part of the new destination known as the Circle.

The Circle is Zurich's new destination offering a wide variety of facilities; from high-end brand stores, several corporate offices, a dozen different restaurant concepts, the University Hospital of Zurich to Hyatt Place Zurich Airport The Circle and The Circle Convention Center, all within walking distance.

Directly situated at the Park offering 80,000 sq m of greenery right at your doorstep!

Very well connected internationally and with the city center of Zurich by all means of public transportation.

TRANSPORTATION

- City center: 10 km / 11 min
- Zurich airport: 500 m / 5 min
- Train station: 500 m / 5 min
- Kloten City: 1.6 km / 3 min

POINTS OF INTEREST

- Nature: The Park, Lake Zurich, Mount Rigi
- Culture: Zurich Opera House, FIFA Museum, Pavillon Le Corbusier, Löwenbräu Areal, Zurich Zoo
- Business: The Circle, Glattpark, Zurich financial district

VISITOR INFORMATION

- Language: German in Zurich and nearby cantons. Other official languages within Switzerland are French and Italian. English is widely spoken in main cities.
- Currency: Swiss Franc (CHF)
- Voltage: 220 V / 110 V
- Visas: All EU and USA citizens can enter Switzerland with a passport, for stays of up to 90 days. All other nationals should check with their Swiss embassy or consulate
- Climate: Continental with cold winters and hot and dry summers

AMENITIES

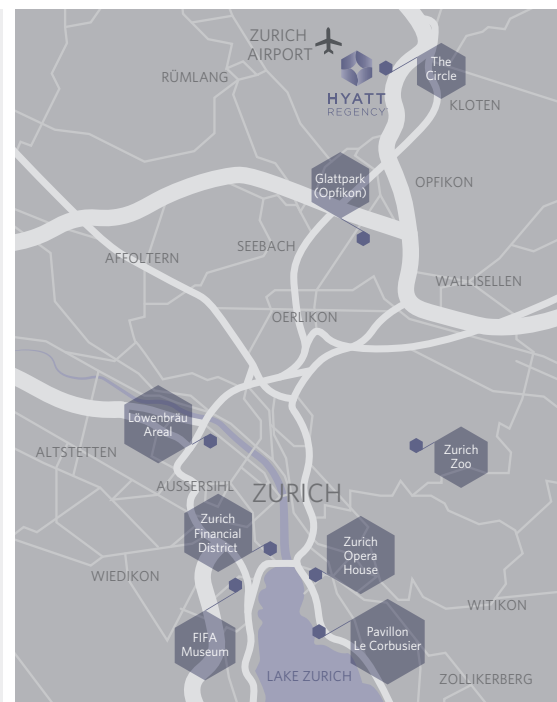
- Room service
- Concierge service
- Multilingual staff
- 24-hour fitness center & wellness area
- Laundry/dry cleaning
- Ample parking and valet service
- Business center services
- Taxi and limousine service upon request
- Communal flex work space

RESTAURANTS & BARS

- **Restaurant Babel** – a dynamic and urban place with an open show kitchen to explore unexpected Middle Eastern flavors, during warmer days on the spacious outdoor terrace with park views.
- **Bar Iris** – offering unparalleled views over the main square of the Circle, Iris is the preferred social hub to enjoy with friends and colleagues a large menu featuring wines, craft beers and cocktails as well as Swiss-inspired shareables and bites.
- **Zum Mitnäh** – a 24/7 take-away market, which provides freshly brewed coffee, a wide range of gourmet sandwiches and healthy snack options around the clock, next to locally sourced specialties.

RECREATIONAL FACILITIES

- Complimentary 24-hour fully-equipped fitness center
- Wellness area with sauna, experience shower and relaxation area



HYATT REGENCY ZURICH AIRPORT THE CIRCLE
 The Circle 41
 8058 Zurich Airport, Switzerland
 T: +41 44 592 1234
 E: hyattregency.zurich@hyatt.com
 hyattregencyzurichairportthecircle.com
 @hyattregencyzurich



CAPACITY CHART



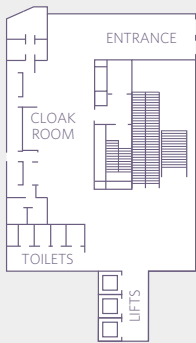
Room Name	Room Dimensions L x W x H	Room Size Sq. M.	Reception	Banquet Round Tables	Theater	Classroom	Boardroom	U-Shape	Hollow Square	Cabaret
Level 1										
ENTRY FOYER	—	350	120	—	—	—	—	—	—	—
Level 2										
FOYER (Section A - C)	—	360	200	—	—	—	—	—	—	—
FOYER (Section A)	—	1,060	525	—	—	—	—	—	—	—
CONVENTION HALL	23.5m x 51.5m x 13.1m	1,292	1500*	850*	1'500*	870*	—	—	—	576*
Section A	23.5m x 16.5m x 13.1m	435	500*	280*	493*	312*	66*	66*	84*	144*
Section B	23.5m x 18.5m x 13.1m	435	500*	280*	493*	312*	66*	66*	84*	144*
Section C	23.5m x 18.5m x 13.1m	388	450*	250*	442*	273*	66*	66*	84*	120*
Section A + B	23.5m x 35m x 13.1m	870	1000	570*	975	606	—	—	—	288
Section B + C	23.5m x 35m x 13.1m	823	950	540*	936	576	—	—	—	264
FOYER (Venue 1 - 4)	—	—	—	—	—	—	—	—	—	—
MEETING ROOM 1 Rotbuche	13.0m x 9.0m x 3.1m	117	160	80	120	90	36	36	42	48
MEETING ROOM 2 Waldkiefer	13.0m x 8.5m x 3.1m	111	180	100	130	90	36	39	42	56
MEETING ROOM 1 + 2	13.0m x 17.5m x 3.1m	228	220	210	250	187	60	63	72	104
MEETING ROOM 3 Feldahorn	12.5m x 9.0m x 3.1m	113	150	80	108	62	30	30	36	48
MEETING ROOM 4 Bergahorn	11.5m x 6.5m x 3.1m	75	90	50	70	38	24	21	24	24
MEETING ROOM 3 + 4	11.5m x 15.5m x 3.1m	178	240	140	178	108	48	47	44	80
Level 3										
FOYER (Venue 5 - 8)	—	—	—	—	—	—	—	—	—	—
MEETING ROOM 5 Vogelbeere	14.5m x 9.0m x 2.8m	131	185	80	137	96	42	45	48	40
MEETING ROOM 6 Vogelkirsche	14.5m x 10.0m x 2.8m	145	190	80	148	96	42	39	42	48
MEETING ROOM 7 Grauerle	11.0m x 14.0m x 2.8m	154	195	70	144	96	36	36	42	48
MEETING ROOM 8 Schwarzerle	8.5m x 9.0m x 2.8m	77	90	30	69	42	18	21	24	24
FOYER (Venue 9 + 10)	—	—	—	—	—	—	—	—	—	—
MEETING ROOM 9 Traubeneiche	10.0m x 4.8m x 2.7m	48	50	20	39	30	24	21	24	—
MEETING ROOM 10 Stieleiche	10.0m x 5.2m x 2.7m	52	50	20	42	24	24	21	24	—
MEETING ROOM 9 + 10	10.0m x 10m x 2.7m	100	120	40	84	54	24	27	30	32
MEETING ROOM 11 Hainbuche	12.0m x 7.0m x 2.7m	118 84**	150	60	73	45	30	27	30	32
MEETING ROOM 12 Sanddorn	8.0m x 7.0m x 2.7m	56	40	20	36	33	18	15	18	—
MEETING ROOM 13 Schlehdorn	5.5m x 6.0m x 2.4m	33	25	10	24	18	12	9	12	—
Level 4										
FOYER (Venue 14 + 15)	—	—	—	—	—	—	—	—	—	—
MEETING ROOM 14 Waldmeister	11.5m x 5.0m x 2.5m	58	40	—	42	36	24	27	24	—
MEETING ROOM 15 Eichenfarn	11.0m x 5.0m x 2.5m	55	40	—	42	36	24	27	24	—
MEETING ROOM 16 Schlüsselblume	9.0m x 4.5m x 2.5m	41	30	—	28	20	16	15	18	—
MEETING ROOM 17 Bärlauch	7.5m x 8.0m x 2.5m	60	40	—	40	32	18	15	18	—

* capacities excluding stage ** reduced capacity depending on room set up
 All above mentioned capacities are subject to change based on local laws, regulations and guidance, and the hotel's and Hyatt's policies.

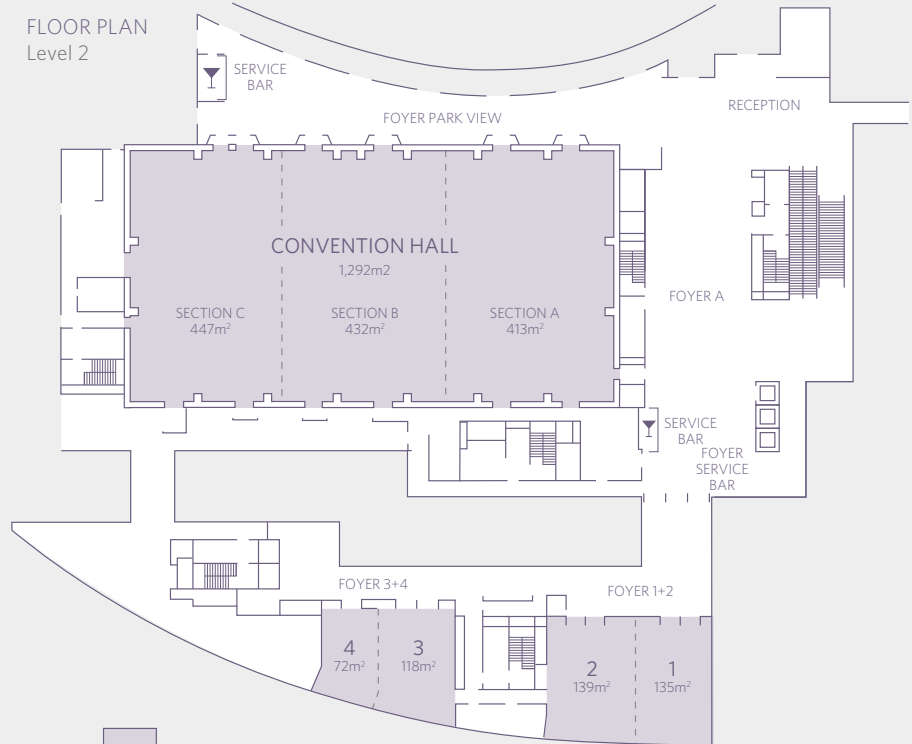
HYATT REGENCY ZURICH AIRPORT THE CIRCLE
 The Circle 41
 8058 Zurich Airport, Switzerland
 T: +41 44 592 1234
 E: hyattregency.zurich@hyatt.com
 hyattregencyzurichairportthecircle.com
 @hyattregencyzurich



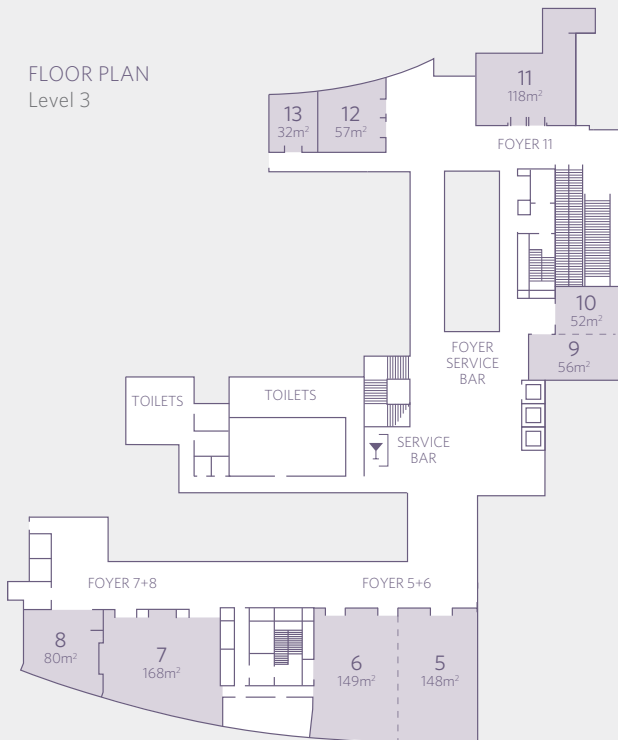
FLOOR PLAN Level 1



FLOOR PLAN Level 2



FLOOR PLAN Level 3



FLOOR PLAN Level 4

