

BRAIN FOOD  
FOR MEETINGS

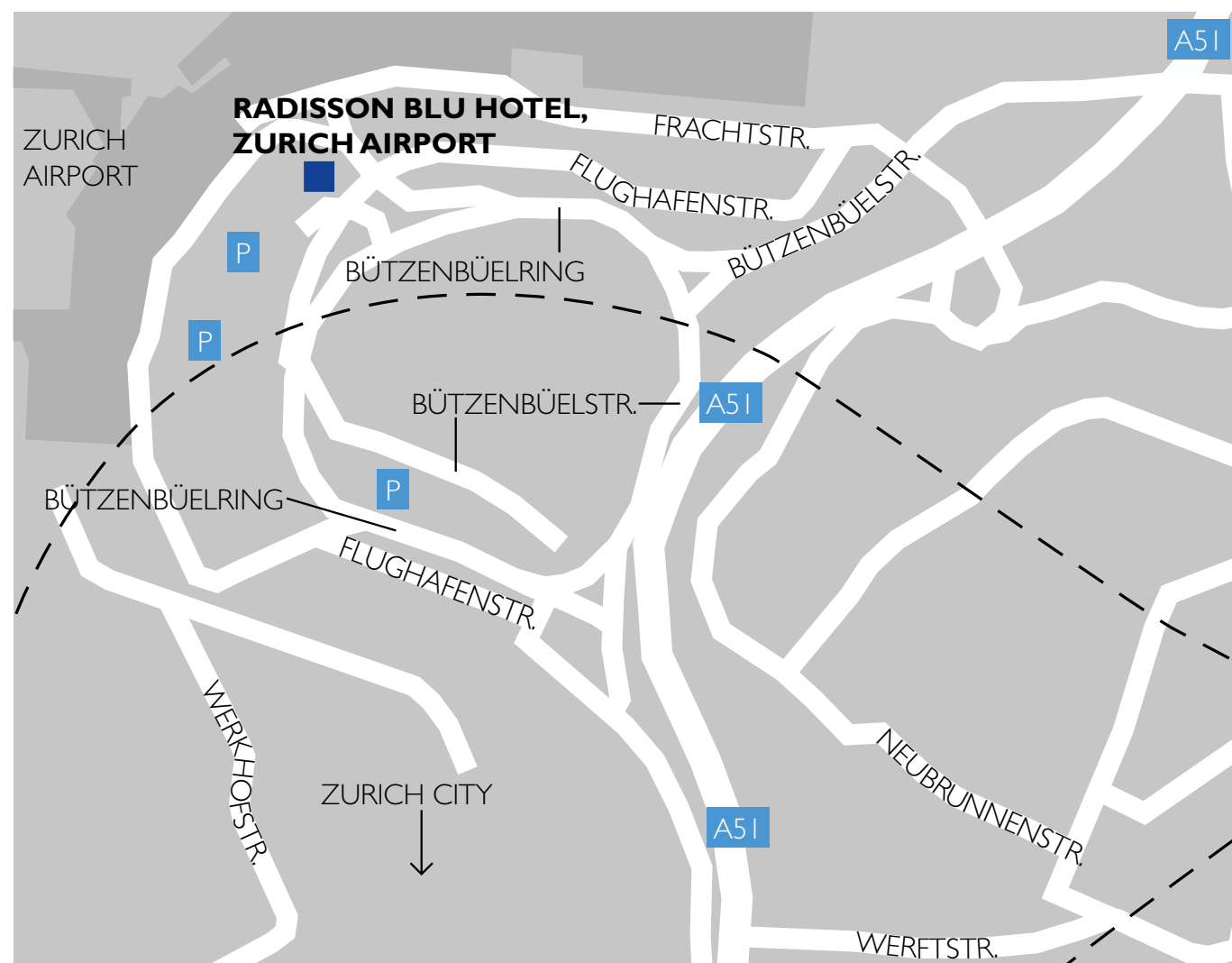
BRAIN BOX  
BREAK-OUT ROOM

FREE  
INTERNET

100% SATISFACTION  
GUARANTEE

Club  
CARLSON  
FOR PLANNERS

THINK  
PLANET



## ARRIVAL

Travelling by car: From all directions, change from the A1 onto the A51 in the direction of the Airport at the 'Zürich Nord' intersection. At the 'Flughafen' / Airport exit, leave the A51 and follow the signs to the multi-storey car parks (Parkhaus). 'Parkhaus 1' is located right next to the hotel. We offer our guests 54 on-site parking spaces on level 8 of 'Parkhaus 1' with direct access to the 8<sup>th</sup> floor of our hotel.

Travelling by plane: The hotel is directly connected to Zurich International Airport and located opposite the terminals (arrival level). Follow the signs and it will take you approximately two minutes walking distance from the baggage drop to the hotel.

Travelling by train: The journey from Zürich HB (Main Station) to Zürich Flughafen (Zurich Airport) takes approximately ten minutes. The hotel is located within a few minutes walking distance from the station.

### RADISSON BLU HOTEL, ZURICH AIRPORT

P.O. Box 295, CH-8058 Zurich Airport, Switzerland  
T: +41 (0) 44 800 40 40 F: +41 (0) 44 800 40 50  
info.zurich@radissonblu.com  
radissonblu.com/hotel-zurichairport

Radisson **BLU**  
HOTEL, ZURICH AIRPORT

# MEETINGS MADE EASY

ZURICH AIRPORT

EXPERIENCE  
MEETINGS

HOTELS DESIGNED TO SAY YES!  
[radissonblu.com/meetings](http://radissonblu.com/meetings)



## WELCOME

Welcome to Zurich's only hotel with direct access to the airport terminals and train station. This business and lifestyle hotel features avant-garde design and provides facilities for conventions, conferences, receptions and gala dinners.

The atrium lobby is famous for its unique 16m Wine Tower with performing Wine Angels.

Spanning an area of more than 4200m<sup>2</sup>, the Radisson Blu Hotel, Zurich Airport is Switzerland's largest convention and congress hotel. The infrastructure consists of 52 multi-functional Meeting Rooms for any event with 2 – 600 participants.

All meeting delegates and hotel residents enjoy free high speed internet access in the entire hotel area.

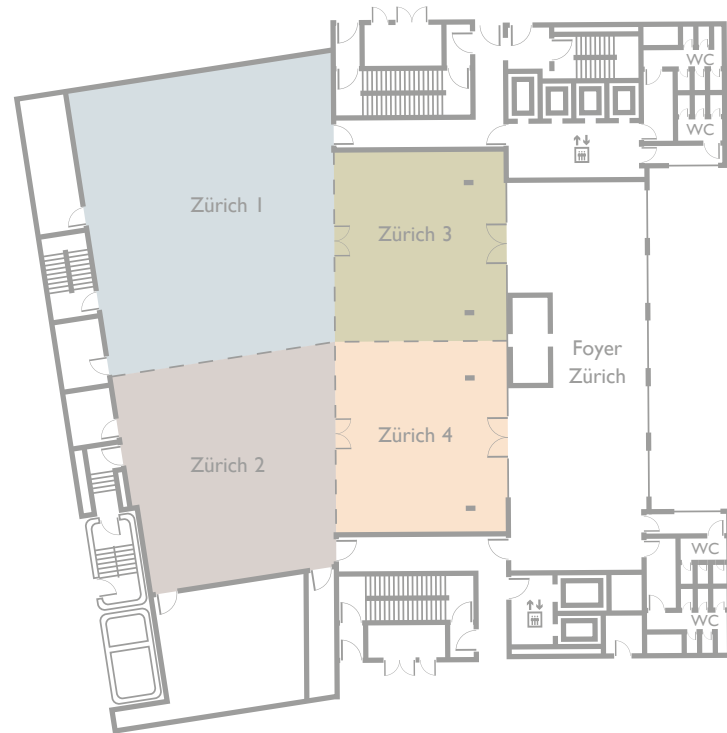
## ANGELS' WINE TOWER

The centrepiece of the spacious Atrium Lobby is the world's tallest Wine Tower at 16m, which can house up to 4,000 bottles of exclusive wine and champagne. Performing Wine Angels serve restaurant and bar guests with the ordered bottles. They will amaze you with their unique shows and regular performances.





## Airfield



## Airfield



The Conference Centre on the 7<sup>th</sup> floor can accommodate up to 245 delegates in 19 multi-functional Meeting Rooms, each with natural daylight. The spacious foyers, located on the same level, are ideal venues for lunches and themed coffee breaks.

The 'Zürich' ballroom can accommodate up to 550 delegates theater style and 600 participants for a cocktail reception.

MEETING ROOM	m²	Width x Length	Height	Theater	Classroom	Cabaret	Bankett	U-shape	Boardroom	Cocktail	Natural light
Zürich 1	247	16.90 x 14.40	4.25	180	130	80	160	-	34	220	✓
Zürich 2	159	12.90 x 11.80	4.25	150	105	60	120	30	30	140	-
Zürich 3	107	11.20 x 9.90	4.25	50	48	40	50	30	34	50	-
Zürich 4	107	11.20 x 9.90	4.25	50	48	40	50	30	34	50	-
Zürich 1-4	620	29.70 x 22.80	4.25	550	280	240	320	-	-	600	✓
Zürich 1+2	406	29.70 x 13.30	4.25	300	230	160	180	-	-	380	✓
Zürich 3+4	214	22.40 x 9.90	4.25	160	-	80	128	-	-	200	-
Zürich 1+3	354	14.00 x 24.30	4.25	240	180	120	220	-	-	240	✓
Zürich 2+4	266	12.10 x 21.70	4.25	230	130	100	130	-	-	240	-
Zürich 1-4 + Foyer	800	29.70 x 38.30	4.25	-	-	-	320	-	-	600	✓
Foyer Zürich	180	22.40 x 7.70	4.25	-	-	-	-	-	-	120	✓

MEETING ROOM	m²	Width x Length	Height	Theater	Classroom	Cabaret	Bankett	U-shape	Boardroom	Cocktail	Natural light
Luzern	116	7.80 x 14.90	2.55	90	60	45	70	35	35	80	✓
St. Gallen	115	7.80 x 14.80	2.55	90	60	45	70	35	35	80	✓
Uri	57	7.80 x 7.30	2.55	40	25	20	32	24	24	40	✓
Zug	49	6.00 x 8.20	2.55	40	20	15	24	15	15	30	✓
Jura 1	87	7.80 x 11.10	2.55	70	50	30	56	24	24	50	✓
Jura 2	58	7.80 x 7.40	2.55	40	25	20	32	24	24	40	✓
Jura 1+2	145	7.80 x 18.50	2.55	110	75	60	96	42	42	150	✓
Schwyz	58	7.30 x 7.90	2.55	40	25	20	32	24	24	40	✓
Unterwalden	58	7.30 x 7.90	2.55	40	25	20	32	24	24	40	✓
Graubünden	64	8.00 x 8.00	2.55	50	32	25	40	25	25	40	✓
Aargau	54	11.10 x 4.90	2.55	35	24	15	24	20	20	40	✓
Appenzell	32	7.90 x 4.00	2.55	20	12	-	-	15	15	25	✓
Tessin	85	7.90 x 10.80	2.55	70	50	30	56	24	24	50	✓
Bern 1	88	7.90 x 11.10	2.55	70	50	30	56	24	24	50	✓
Bern 2	88	7.90 x 11.10	2.55	70	50	30	56	24	24	50	✓
Bern 3	58	7.90 x 7.30	2.55	40	25	20	32	24	24	40	✓
Bern 1+2	176	7.90 x 22.20	2.55	140	80	75	120	60	-	180	✓
Bern 2+3	146	7.90 x 18.40	2.55	110	75	60	96	42	-	150	✓
Bern 1-3	234	7.90 x 29.50	2.55	180	116	80	160	60	-	245	✓
Vaud	55	7.90 x 7.00	2.55	40	25	20	32	24	24	40	✓
Valais	32	7.90 x 4.00	2.55	20	12	-	-	15	15	25	✓
Basel 1	88	11.10 x 7.90	2.55	70	50	30	56	24	24	50	✓
Basel 2	58	7.30 x 7.90	2.55	40	25	20	32	24	24	40	✓
Basel 1+2	146	18.40 x 7.90	2.55	110	75	60	96	42	-	150	✓

# BOARD MEETINGS (LEVEL 8)

The 8<sup>th</sup> floor consists of 27 individually designed Board Rooms, two multi-functional Meeting Rooms, a fully equipped video conference room, four business lounges, three guest offices, two executive day rooms and a Business Service Centre.

This level is directly connected to the hotel's 54 parking spaces in 'Parkhaus I'.



MEETING ROOM CAPACITY LEVEL 8											
MEETING ROOM	m²	Width x Length	Height	Theater	Classroom	Cabaret	Bankett	U-shape	Boardroom	Cocktail	Natural light
Alicante	3	4.60 x 8.00	2,60	-	-	-	-	-	12	-	✓
Aberdeen	30	3.70 x 8.00	2,60	-	-	-	-	-	12	-	✓
Zagreb	21	3.74 x 5.60	2,60	-	-	-	-	-	6	-	✓
Visby	20	3.57 x 5.60	2,60	-	-	-	-	-	6	-	✓
Verona	90	11.22 x 7.90	2,60	60	50	30	40	24	-	50	✓
Valencia	95	11.80 x 8.00	2,60	60	50	30	40	30	-	50	✓
Copenhagen	22	3.70 x 5.90	2,60	-	-	-	-	-	8	-	✓
Belgrade	22	3.70 x 5.90	2,60	-	-	-	-	-	8	-	✓
Geneva	22	3.70 x 5.90	2,60	-	-	-	-	-	8	-	✓
Frankfurt	22	3.80 x 5.90	2,60	-	-	-	-	-	8	-	✓
Paris	22	3.80 x 5.90	2,60	-	-	-	-	-	8	-	✓
Vienna	23	3.70 x 6.10	2,60	-	-	-	-	-	8	-	✓
Istanbul	29	3.60 x 7.90	2,60	-	-	-	-	-	12	-	✓
Madrid	29	3.60 x 7.90	2,60	-	-	-	-	-	12	-	✓
Lisbon	29	3.70 x 7.90	2,60	-	-	-	-	-	12	-	✓
Oslo	29	3.70 x 7.90	2,60	-	-	-	-	-	12	-	✓
Venice	29	3.70 x 7.90	2,60	-	-	-	-	-	12	-	✓
Thessaloniki	29	3.70 x 7.90	2,60	-	-	-	-	-	12	-	✓
Barcelona	29	3.70 x 7.90	2,60	-	-	-	-	-	12	-	✓
Rome	29	3.60 x 8.20	2,60	-	-	-	-	-	12	-	✓
Stockholm	29	3.60 x 8.20	2,60	-	-	-	-	-	12	-	✓
Amsterdam	30	3.80 x 7.90	2,60	-	-	-	-	-	12	-	✓
London	30	3.70 x 8.20	2,60	-	-	-	-	-	12	-	✓
Moscow	30	3.80 x 7.90	2,60	-	-	-	-	-	12	-	✓
Brussels	35	4.30 x 8.20	2,60	-	-	-	-	-	10	-	✓
Prezone Brussels	22	6.70 x 3.30	2,60	-	-	-	-	-	10	-	✓
Berlin	61	7.60 x 7.90	2,60	40	30	20	40	18	18	40	✓
Prezone Berlin	22	3.70 x 5.90	2,60	-	-	-	-	-	-	-	✓
Dublin	61	7.70 x 7.90	2,60	40	30	20	40	18	18	40	✓
Prezone Dublin	29	3.60 x 7.90	2,60	-	-	-	-	-	-	-	✓
Milan	61	7.70 x 7.90	2,60	40	30	20	40	18	18	40	✓
Prezone Milan	29	3.60 x 7.90	2,60	-	-	-	-	-	-	-	✓
Athens	66	8.00 x 8.20	2,60	40	30	20	40	18	18	40	✓
Prezone Athen	10	2.90 x 3.30	2,60	-	-	-	-	-	-	-	✓
Video Conferencing	22	3.70 x 6.10	2,60	-	-	-	-	-	6	-	✓
Kloten Lounge	70	8.00 x 8.75	2,60	-	-	-	-	-	-	30	✓
Airfield Lounge	57	5.00 x 11.40	2,60	-	-	-	-	-	-	30	✓
Atrium Lounge	38	8.10 x 4.60	2,60	-	-	-	-	-	-	20	✓
Mountain View Longe	56	10.95 x 5.10	2,60	-	-	-	-	-	-	40	✓
Guest Office 01	22	5.90 x 3.60	2,60	-	-	-	-	-	-	-	✓
Guest Office 02	22	5.90 x 3.60	2,60	-	-	-	-	-	-	-	✓
Guest Office 03	22	5.90 x 3.70	2,60	-	-	-	-	-	-	-	✓
Day Room 01	30	8.20 x 3.70	1	-	-	-	-	-	-	-	✓
Day Room 02	30	8.20 x 3.70	2,6	-	-	-	-	-	-	-	✓
Shower Rooms 3 x 1	37	4.20 x 8.20	2,6	-	-	-	-	-	-	-	✓

## CONFERENCE CENTRE

The hotel's Conference Centre located on levels 1, 7 and 8 consists of extensive facilities from hourly to multi-day business events. These include 52 Meeting Rooms, four foyers, four lounges (two with balconies), one video conference room, three guest offices, two executive day rooms and two Business Service Centres. Our Ballroom 'Zürich' is located on level 1 and can be divided into four parts.

Our in-house partner 'KFP Five Star Conference Services' provides comprehensive technical support services. These range from basic set-up to extensive lighting, visual and sound effects for any technical requirement.

## EXPERIENCE MEETINGS

Experience Meetings by Radisson Blu is a concept ensuring successful meetings by harmonising the tangibles: breakout rooms, connectivity and food with the intangibles such as: service, satisfaction and sustainability.

**Brain Food**, an integral part of Experience Meetings, is perfect meeting comestibles that improve efficiency, ability to concentrate and mental speed. Experience Meetings makes it easy for you to go online when you meet with **free WiFi** for all meeting delegates.

Plus each time you book a meeting or event at the Radisson Blu Hotel, Zurich Airport you can earn Gold Points® within our Club Carlson<sup>SM</sup> for Planners programme. Sign up now at [clubcarlson.com](http://clubcarlson.com) and you can start earning points for Award Nights, upgrades and much more.

BRAIN FOOD  
FOR MEETINGS

BRAIN BOX  
BREAK-OUT ROOM

((( FREE  
INTERNET )))





## ROOMS & WELLNESS FACILITIES

The 330 guest rooms and suites are decorated in four different styles: 'At Home', 'Fresh', 'Chic' and 'Charme', designed by Matteo Thun, George Nelson, Cassina and the Castiglioni brothers. Guests experience the comfort of a modern business hotel, including a flat screen TV, free high-speed WLAN internet access and a laptop sized safe with an integrated power socket.

Exciting views of the airport, Swiss mountains or the Wine Tower make for a stunning hotel room ambience. Quadruple glazing and soundproof windows ensure a tranquil stay.

Guests of our Business Class category enjoy additional complementary services, amongst others, the Super Breakfast Buffet, a Nespresso® Coffee Machine, a daily newspaper, Pay TV and all non-alcoholic Mini Bar items.

The PACE Fitness Club offers high-tech Cardio equipment such as a treadmill, bike, cross trainer, as well as light-weight equipment to ensure an efficient workout. The fitness room offers fascinating views of the atrium lobby and the Wine Tower and includes a sauna, steam bath and a relaxation room.

## WORLD OF GASTRONOMY

Modern interpretations of Italian classics and an atmosphere reflecting the 'Dolce Vita' of our southern neighbour await you in the Filini Restaurant. In the mornings, the Super Breakfast Buffet offers a broad selection of tempting hot and cold meals.

First class meat and fish specialities, an open show-kitchen, 'Alpine Chic' architecture and a clear view of the Wine Tower make the angels' wine tower grill a gastronomic experience for all senses. During the summer months one can enjoy a rich assortment of food and beverages at the outdoor venue Giardino Blu – a part of the Filini Restaurant.

